

**EZ**<sup>R</sup>  
**M**



Features



**MANAMED**<sup>™</sup>



## Post-Op Adjustable Knee Brace

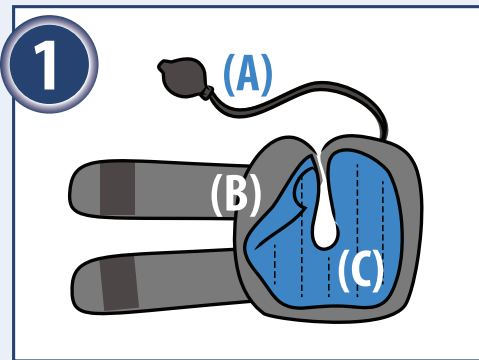
The EZ Rom adjustable knee brace allows the user to adjust the range of motion. This product is ideal for knee ligament damage, knee surgeries, and instability of the knee. The EZ Rom is designed for post-operative fixation, allowing the doctor to lock the patient into extension and control range of motion as prescribed. The product includes an ice pack and a compression system for pain and swelling.

### Features and Benefits

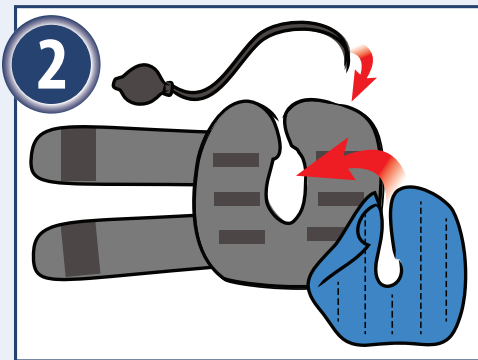
- |   |                  |
|---|------------------|
| Removeable range of motion hinges                   | Easy application |
| Removeable ice pack                                 | Latex free       |
| Compression bulb to fill the knee orthosis with air | Universal size   |

### Indications for Use

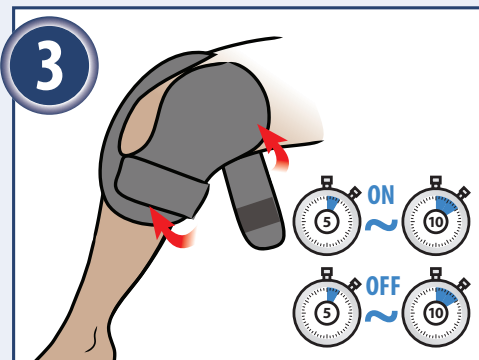
- |                                     |                                    |
|-------------------------------------|------------------------------------|
| ACL, PCL, MCL, LCL repairs/injuries | Conservative Care of Knee Injuries |
| Tibial plateau fractures            | Patella tendon repairs             |
| Osteochondral repairs               | Sprains/strains of the knee        |
| Meniscal repairs                    | HTOs (high Tibial osteotomy)       |



Check the parts. (A) Pump with tube, (B) Compressor device, (C) EZ ROM Ice Pack. Refrigerate the (C) EZ ROM Ice Pack for at least two hours prior to usage.



Place EZ ROM Ice Pack on the inside of Compressor device after refrigeration. Connect the tube to the ON/OFF switch and turn "ON" the switch.



Position the Compressor device so the hole appears at the knee joint. Wrap the velcro straps to secure in place. For best results; ON for 5-10 minutes, OFF for 5-10 minutes.



To adjust flexion and extension control, remove the pins to the desired settings of your prescribing physician.

### Order information

Part Number: EZR001

Size: Universal

### How to order

Email: [orders@manamed.net](mailto:orders@manamed.net), Fax: 888-508-0712, Call: 888-508-0712

1511 W. Alton Ave.,  
Santa Ana CA 92704  
[www.ManaMed.Net](http://www.ManaMed.Net)



MANAMED™